

## 2010 Texas QSO Party Participation and Activity Report

### Introduction

From where I sat in the NO5W/M mobile contesting machine with able driver Keith, NM5G at the wheel, it seemed that participation in the 2010 TxQP was the highest it's been in recent memory. One comment seen on 3830 was along the lines of “this party raises the bar to a new level” So I thought that, while waiting for the last set of paper logs and floppy disks (yes we still get those) to trickle in via USPS, I would try to quantify that feeling with a look at the data base of QSOs, slicing and dicing the data in various ways that would indicate level of participation and see, for future TxQP events, just how far the bar has been raised. So, if you like numbers and graphs, this report's for you. In the following “active” means that at least one QSO was made by the station or county during the hour in question. Here is an overview of the contents of the report.

- A histogram showing the distribution of number of hours stations were in the chair
- Chronological plots of the following
  - number of stations active in each contest hour
  - number of counties active in each contest hour
  - number of QSO records logged in each contest hour
  - average number of QSOs by those mobile stations active in every contest hour
  - average number of QSOs by those in-state fixed stations active in every contest hour
  - average number of QSOs by those out-of-state fixed stations active in every contest hour
- A list of stations, the hours in which they were active, and identification of those stations that supported the contest during every hour.

The last four items above reference stations that were active in every hour of the contest. These are the “Butt-in-Chair” or BIC award winners. There were forty-five (45) of them including ten (10) mobile stations, fourteen (14) in-state fixed stations, and twenty-one (21) out-of-state fixed stations. Here's a list of the BIC stations in each of those categories. The participation of this group forms the core activity of the QSO party and is very much appreciated, as it is not easy to carve out an entire weekend to devote to a contest and there are many from which to choose.

**Mobile BIC Stations:** AD4EB (+ driver KI4HVY), K5NA (K5OT, W5ZL + driver K5NA), KK5LO (+ driver K5WNO), N5DO (+driver K5FD), N5NA(+driver K5AKS), N5RZ(+driver KF5HHD), N5TM (N5TM, K5GQ), NO5W(+driver NM5G), W0BH (W0BH, N6MU), W5TM (W5TM, WW5X).

**In-State BIC Stations:** AE5GT, K5BZH, K5LH, KD5LNO, N5HW (NA6M W5TSN W5ETY W5TA K3QIA), N5NK, N5NXS, NR5M (NR5M, K5GA, W5AAC), NT5O, W5CT (NX5M, N5XJ, KU5B, NT5TU, NE5B, W5JDG ), W5MF, W5SL, WB5BKL, WD5DDH ( KD5NFW, AD5DJ, K5NY, KD5VQN, WB5JC ).

**Out-of-State BIC Stations:** K3TW, K4ZGB, K7ZD, K8QWY, KB9OWD, KI2G, KN4Y, KV8Q, N1LN, N4AAI, N4JF, N5LZ, NT2A, VE3KZ, W1KDA, W4UCZ, W7GVE, W8CM, WA3HAE, WA6KHK, and WB2ABD.

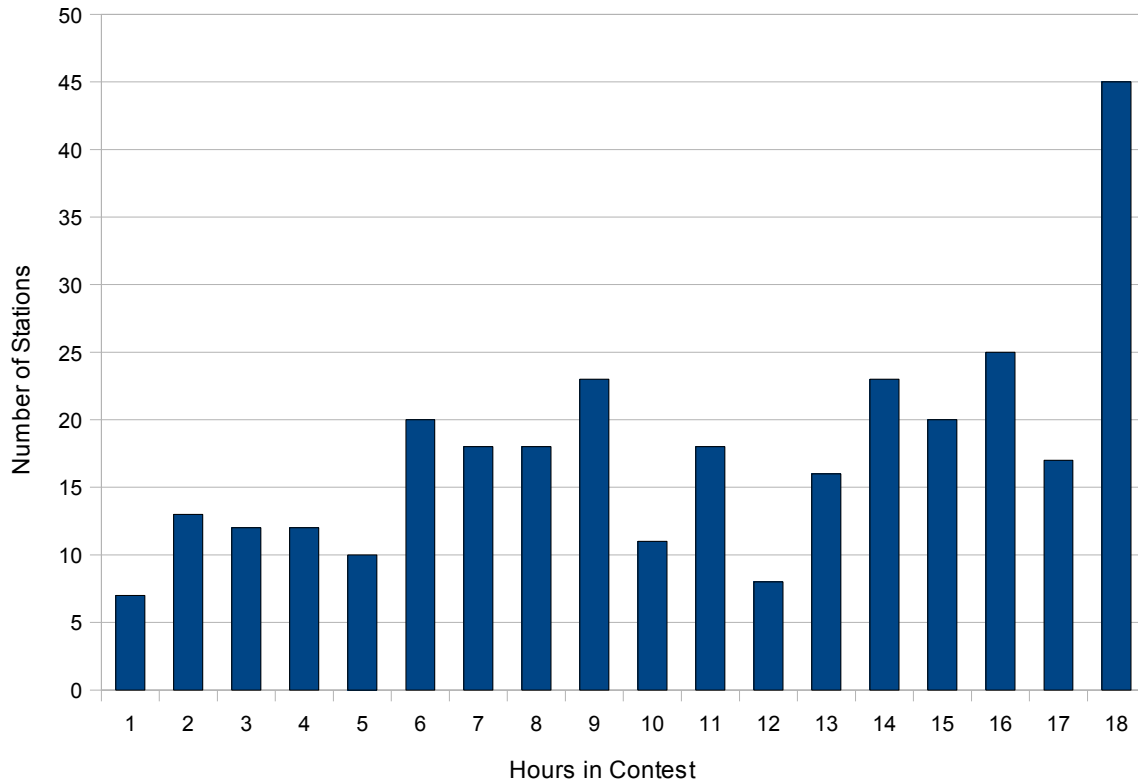
One of the goals of the in-state stations is to keep the out-of-state stations engaged and in the chair by continuing to offer up new counties. According to a “there was no time for breaks” comment posted on 3830 and the above list of out-of-state BIC stations that goal was definitely met.

## 2010 Texas QSO Party Participation and Activity Report

Of course just staying in the chair doesn't necessarily get the job done so it's important to look at whether all of that chair time resulted in QSOs going into the logs. So later on in the report we'll use a series of graphs to take a look at the average number of QSOs made in each hour by each of the above BIC groups.

### Participation Histogram

The following graph shows the number of stations that were active (made at least one QSO) in the given number of hours during the QSO party.



Of the 320 logs turned in a phenomenal 45 or about 14% of them were from stations that operated in all eighteen hours of the contest. About 25% (~86) of the logs were from stations that operated in sixteen or more hours and about 50% (160) of the logs were from stations that operated in at least eleven hours. That represents a lot of commitment. The BIC stations have been noted in the introduction, so here are the BIC-1 and BIC-2 stations that were in the chair seventeen and sixteen hours respectively.

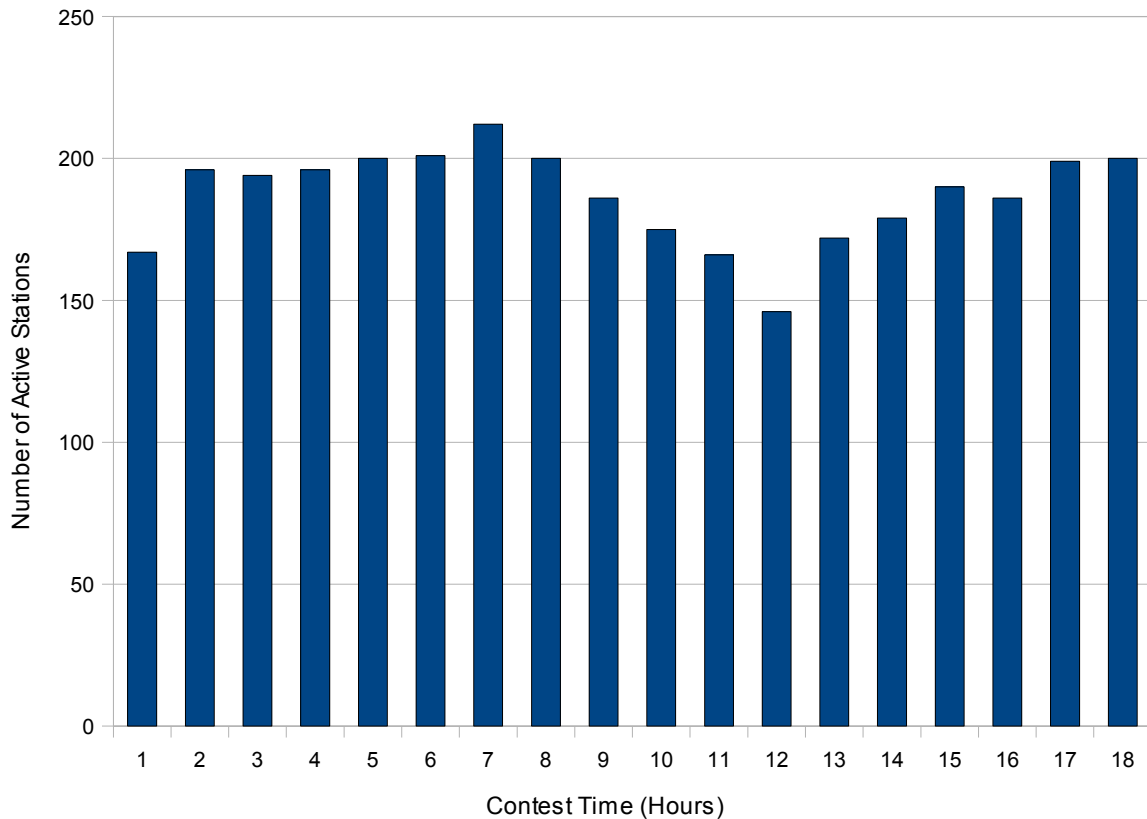
**BIC-1 Stations:** K0DEQ, K4AMC, K5DX, K5IZO, K5UN/M, K6WSC, K8FZY, N8II, NV5C, W0GXQ, W5HNS, W5PF, W8TM, W0LHG, WB8LBZ, WC5T/M, WD5IYT/M.

**BIC-2 Stations:** AA4GT, AD5WB, DL3DXX, K0HNC, K0PC, K4AMA, K5DNB, KB9BIT, KD5EIJ, KK5W/M, KK7AC, N0TA, N5JB, N5MT, N5WR, N5XTR/M, ND3R, NG5NG, W3DYA/M, W5ESE, W5JAW, W5JNP, W6USN, WA8ZBT, WB0TEV/M, WI5ID.

## 2010 Texas QSO Party Participation and Activity Report

### Hour-by-Hour Station Activity

If you participated across a significant number of hours you probably developed a feel for the level of activity as it waxed and waned during the course of the contest. The following graph should help to quantify those impressions by showing the number of stations that were active in each of the hours of the contest.

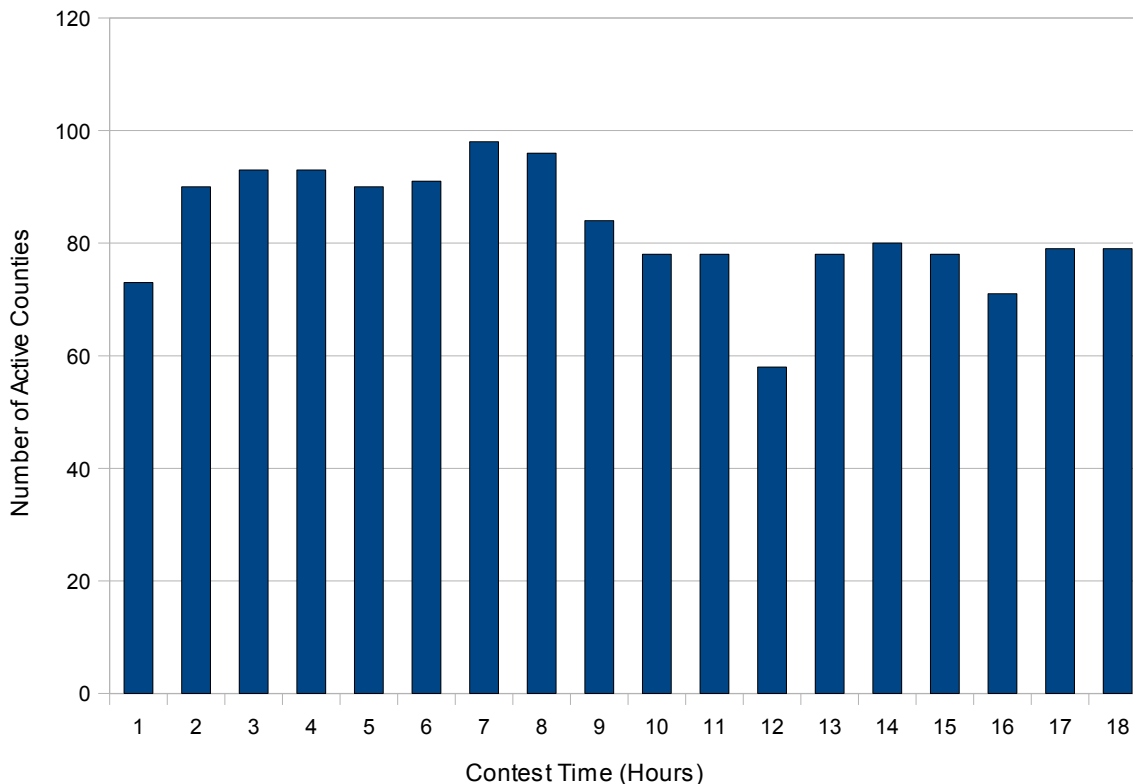


The peak hour in terms of number of stations on the air was hour beginning 2000Z Saturday shown as hour 7 on the graph. During that hour 212 stations were on the air. The hour of minimum station activity was the hour beginning 0100 Sunday shown as hour 12 on the graph. During that last hour of the first session of the party some stations decided to turn in early leaving 146 stations active in that hour. Over the entire period of the contest the average number of active stations was 187.

## 2010 Texas QSO Party Participation and Activity Report

### Hour-by-Hour County Activity

Having a significant number of counties on the air with new ones continually appearing is what fuels the QSO party and makes it interesting. Here is a graph showing the number of counties active during each hour of the contest.



The graph demonstrates that a steady stream averaging 83 counties was available during the contest with the peak number of 98 counties occurring during the hour beginning 2000Z on Saturday and shown as hour 7 on the graph. On the other hand the last hour of the first session, hour beginning 0100Z Sunday and shown as hour 12, offered a minimum of 58 counties to those that stayed around for the end of that session.

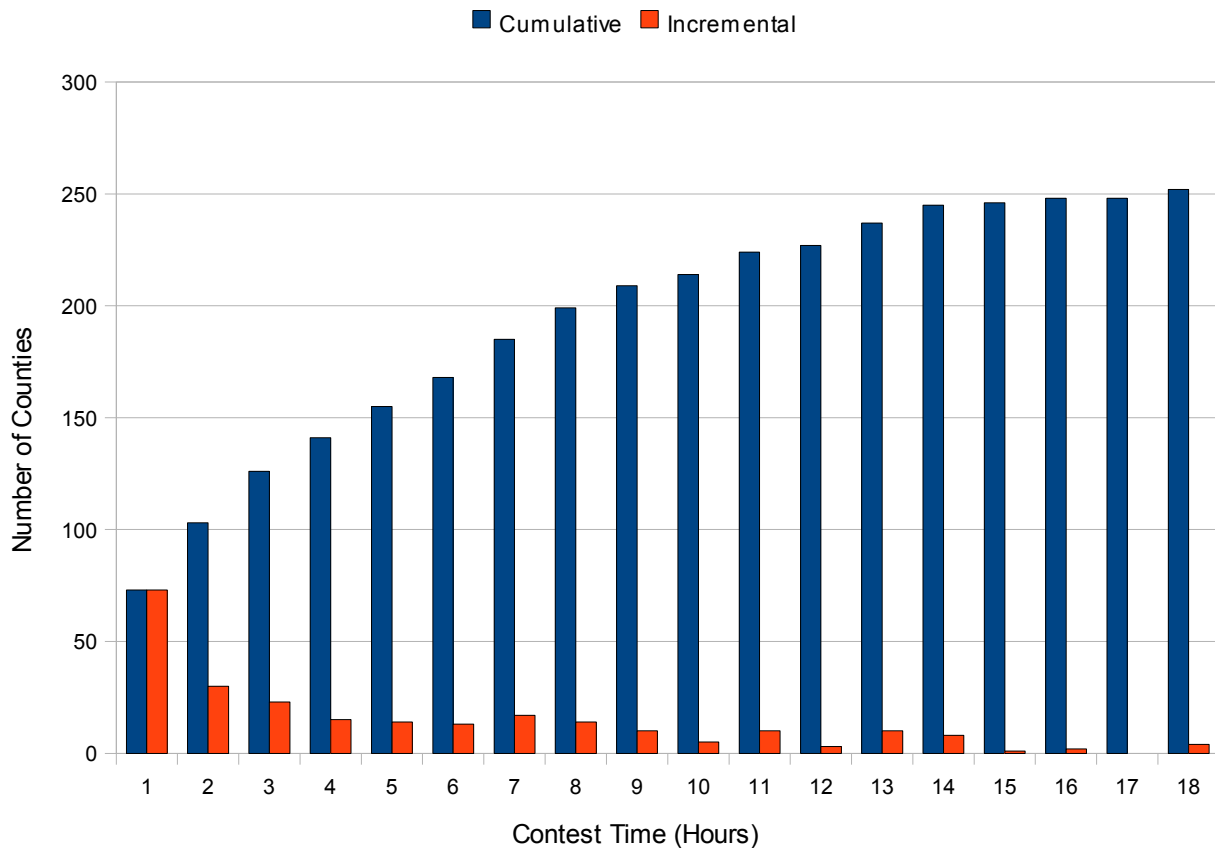
Of course a steady stream of 83 of the same counties from hour to hour, although somewhat impressive, would not be the best way to fuel continued interest so its important to look at the cumulative number of different counties on the air as the contest progressed.

## 2010 Texas QSO Party Participation and Activity Report

### Cumulative Counties on the Air

Each year the prime objective of the Texas QSO Party is to activate each of the 254 counties but it has been some time since that goal was last achieved. The following graph shows the number of counties activated from the start of the contest through the hour shown as well as the incremental number of counties added by each hour. In the listing below the first number is the cumulative number of counties active at the completion of the given hour and the second number is the number of new counties added during the hour.

Hour	Cumulative	Incremental
1	73	73
2	103	30
3	126	23
4	141	15
5	155	14
6	168	13
7	185	17
8	199	14
9	209	10
10	214	5
11	224	10
12	227	3
13	237	10
14	245	8
15	246	1
16	248	2
17	248	0
18	252	4



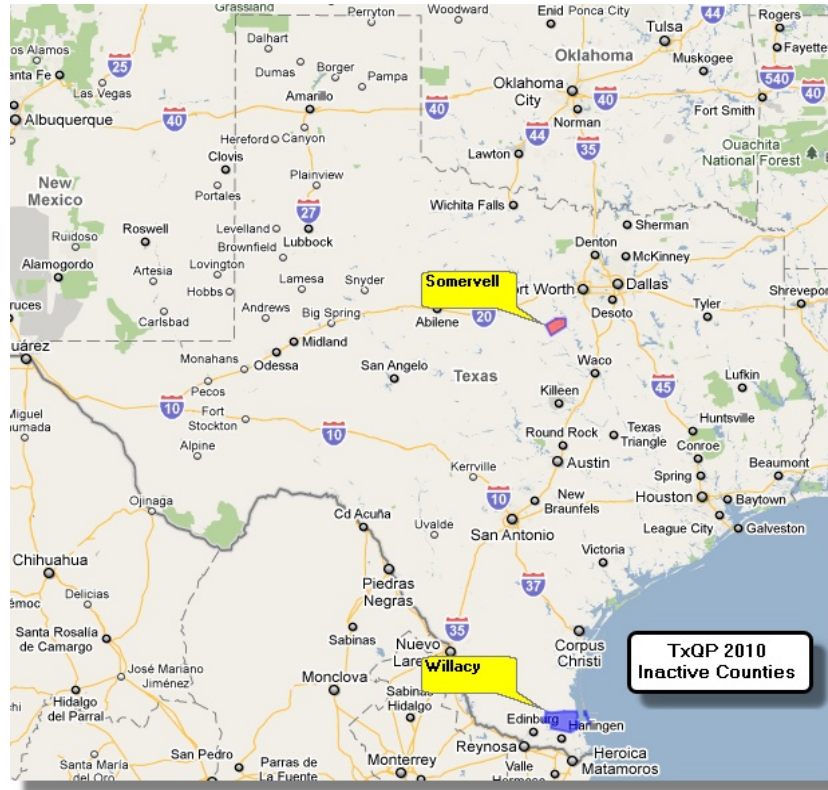
After a start of seventy-three (73) counties in the first hour of the contest, counties were added at a steady rate of between thirty (30) and ten (10) per hour through hour beginning 2200Z bringing the total counties activated by the end of hour 2200Z to 209. In the remaining three hours of the first session eighteen (18) new counties were added bringing the total to 227 by the end of the first session. Sunday was not without new counties as twenty-five (25) more were added bringing the total number of counties activated during the two sessions to 252, just two shy of the goal of 254. That's amazing!

It's interesting also to note that there was only one hour of the eighteen in which a new county was not offered and that was in the next to last hour of Sunday. However, we were not done with new counties yet and those that stuck around for the hectic last hour of the contest had four new counties to work.

## 2010 Texas QSO Party Participation and Activity Report

### Somervell and Willacy Counties Were Inactive

Somervell and Willacy were the only two counties not activated during the QSO party. In case you're wondering where those two are located here they are.

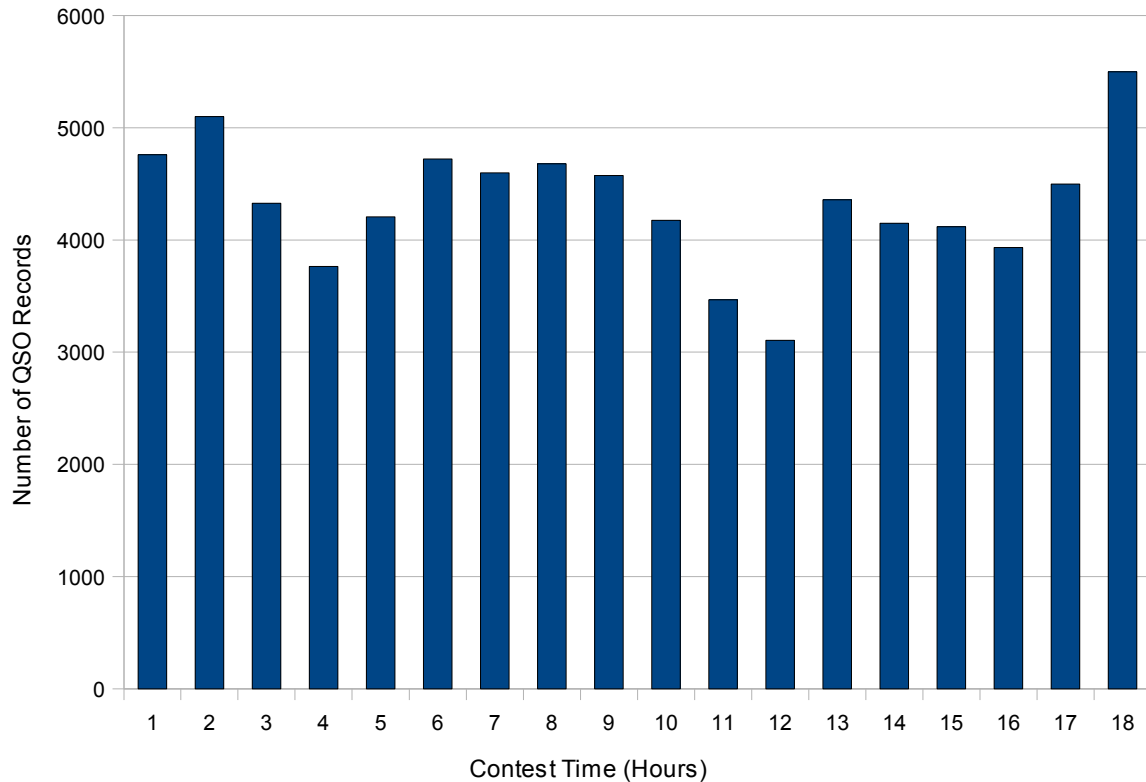


Somervell, not far from Fort Worth-Dallas area, and Willacy, just up Hwy 77 from Harlingen, should go to the top of the list for activation in 2011.

## 2010 Texas QSO Party Participation and Activity Report

### Hourly QSO Activity

Active stations and active counties should add up to QSOs in the log and they did. The 320 logs received contained a total of approximately 80,000 QSO records. The chart below shows how those QSO records were distributed across the hours of the contest.

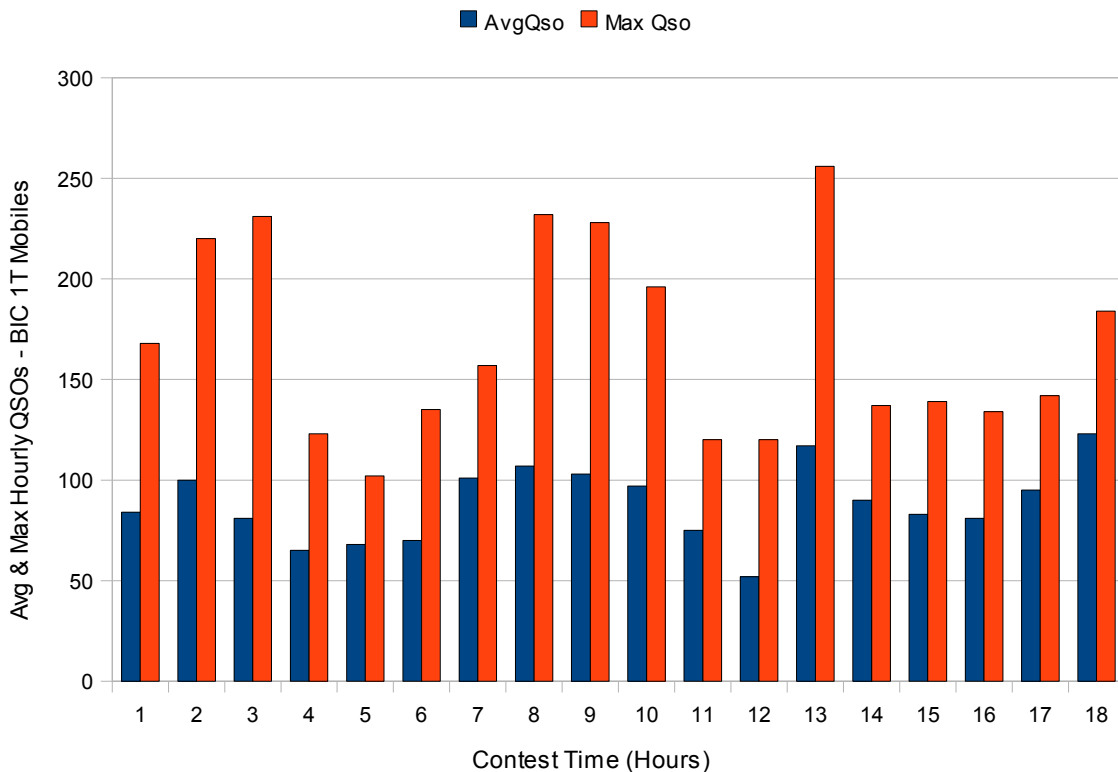


The average number of hourly QSO records was 4335. The final hour of the contest turned out to be the one with the most QSOs as recorded in the submitted logs with 5500 QSO records, while the slowest hour was the last hour of session 1 (hour beginning 0100Z Sunday) with only 3106 records. The next slowest hour was the hour just prior to the last your of session 1 with 3467 QSO records. There have suggestions in the past of moving one or both of those two hours to Sunday afternoon. This would be at the expense of reduced opportunity for 80m QSOs and would virtually eliminate 80m as a viable band in the party so such a move would have to be reviewed very carefully. Any comments or opinions along these lines would be welcomed.

## 2010 Texas QSO Party Participation and Activity Report

### Hourly QSO Activity by BIC Single Transmitter Mobiles

Now suppose you are considering going single transmitter mobile in the Texas QSO Party and have plans to be active in all of the hours of the party – i.e. to occupy a position in the list of BIC Mobiles. What kind of hourly rates could you expect as a result of that commitment? Hopefully the chart below will help answer that question. It was developed by summing in each hour the QSOs recorded by the group of nine single-transmitter BIC mobile stations and then averaging those records over all the stations in that group. So keep in mind that the QSO hourly numbers shown below are averages so some stations may have been experiencing rates well above the value and others somewhat below the value. The maximum hourly QSOs for this group are also shown on the chart. This maximum was, of course, not always by the same station but was shared by six of the nine stations in the group, and, one might expect was strongly dependent on the number of counties that the station was able to activate during the hour. Several of the very high peaks are from stations operating on a corner of four counties.



The hour of minimum QSO activity for the BIC single transmitter mobile group was the last hour of the first session where the number of QSOs fell to 51. The average QSOs by this group averaged over all hours of the contest was 88. As a single transmitter mobile with average capability, if you wanted rate, you needed to finish strong, be around for the last hour of the contest where the average number of QSOs by the BIC mobiles was 123, and be able to activate multiple counties either by operating on a corner or by planning your route to enable 3-4 counties during an hour.

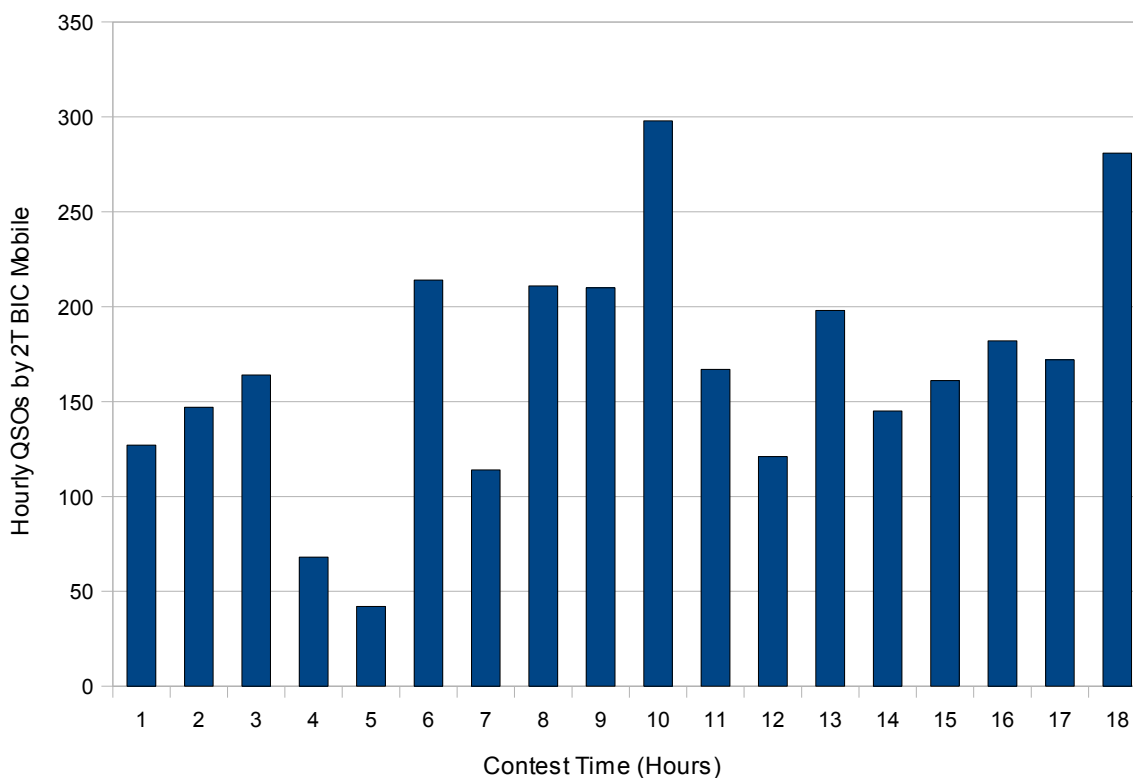


## 2010 Texas QSO Party Participation and Activity Report

### Hourly QSO Activity by BIC Two-Transmitter Mobiles

Now suppose you are considering going two-transmitter mobile in the Texas QSO Party and have plans to be active in all of the hours of the party – i.e. to occupy a position in the list of BIC Mobiles. What kind of hourly rates could you expect as a result of that commitment? Hopefully the chart below will help answer that question but you should keep in mind that establishing a multi-transmitter mobile station is not for the faint of heart. Extreme attention to detail is required in order to insure that inter-station interference is kept to a minimum. So its not surprising that, although there were a number of two-operator teams, there was only a single Multi-Transmitter station, K5NA, with operators K5OT and W5ZL driven by K5NA, aka The Flying Burrito Brothers.

So suppose you get the technical issues worked out and gather a team consisting of a driver and two excellent operators, what can you expect on the basis of the 2010 Texas QSO Party.

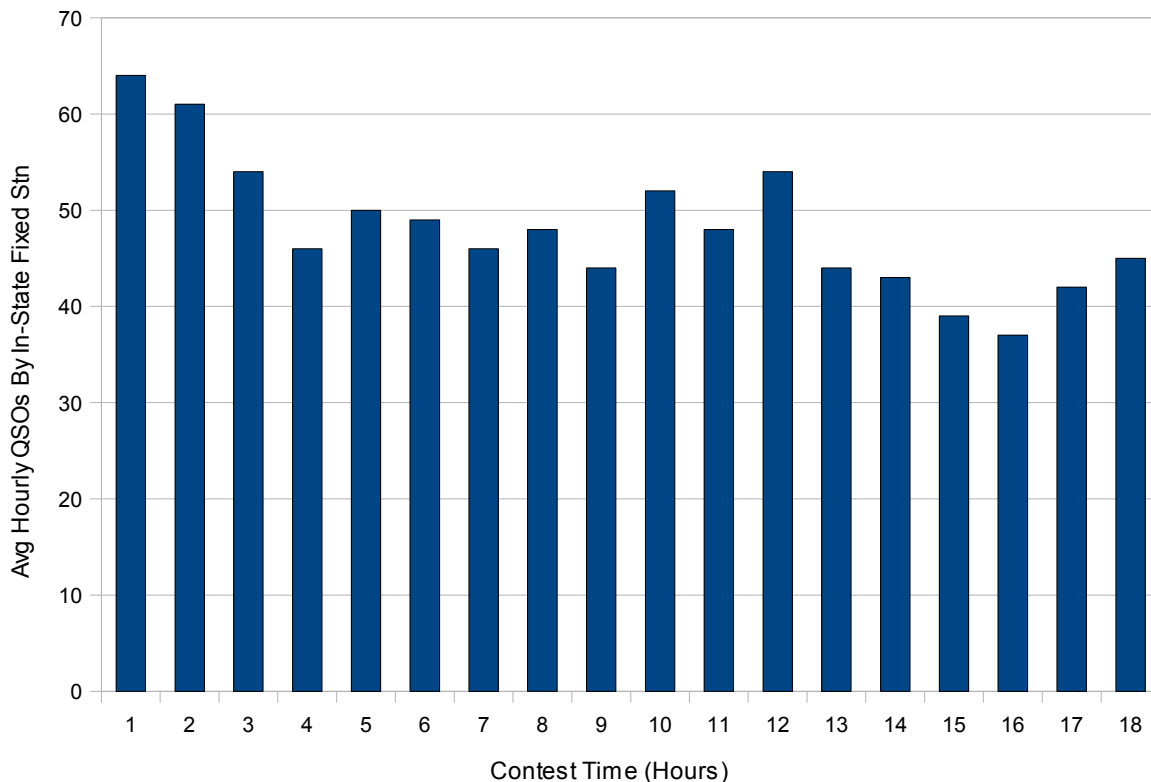


Peak hourly QSOs for the two-transmitter mobile was 298 in the hour shown as 10 (hour beginning 2300Z Saturday) and their minimum hourly QSOs was undoubtedly during an extended lunch of burritos during hours 4 and 5 (hours beginning 1700Z and 1800Z). Average hourly rate was 168 for this two-transmitter station.

## 2010 Texas QSO Party Participation and Activity Report

### Hourly QSO Activity by BIC In-State Fixed Stations

Now suppose instead that you plan to operate as a fixed in-state station with plans to be in the chair the entire 18 hour period. On average what kind of hourly rates could you expect as a result of that commitment? The chart below shows the level of activity by that group.



For the in-state fixed stations the trend in number of QSOs per hour is generally downward as the contest progresses, trending lower and in the opposite direction from the general trend of the mobile QSO activity. Of course the mobiles have an advantage in that in order to work a station already worked all they need to do is change counties, whereas the fixed stations can only change bands and modes and once a station is worked on all bands and modes that's it.

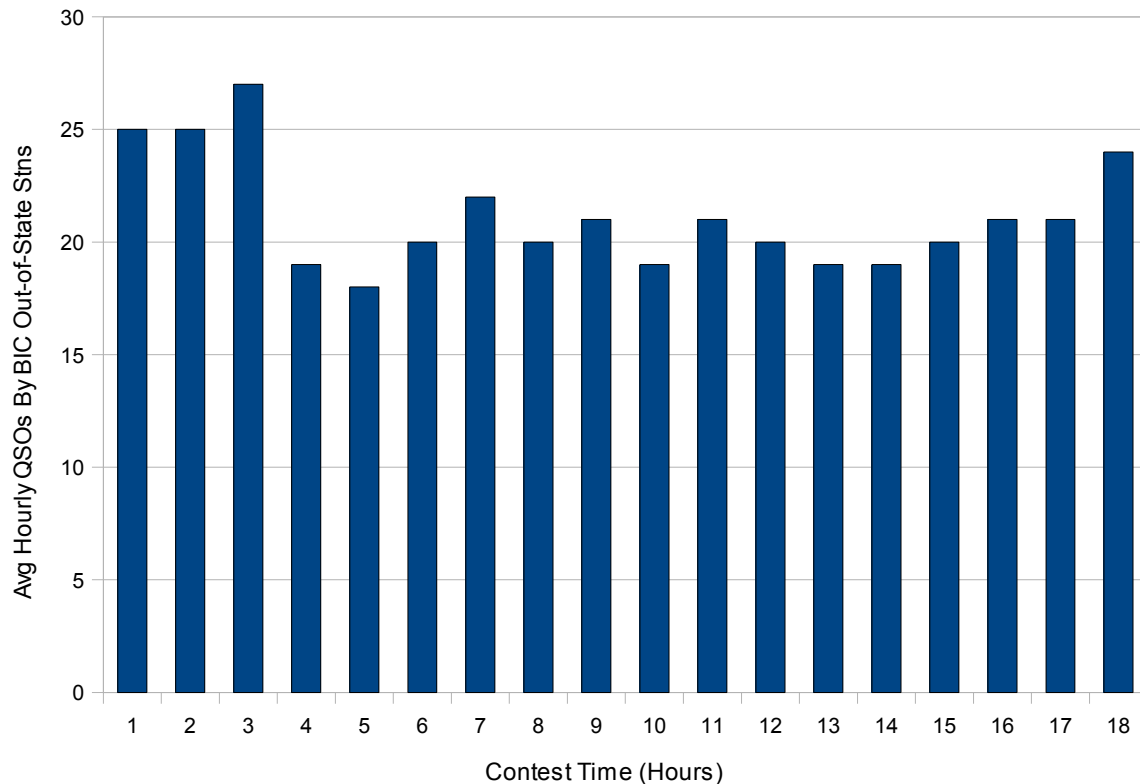
Interestingly the average hourly QSO rate for the fixed in-state stations during hour beginning 0100Z Sunday, the last hour of session 1, is approximately equal to that of the BIC mobiles in the same hour and for the fixed stations this hour is not the hour of slowest activity. Typically 80m is a tougher band than 40m or 20m for mobiles and this is probably one of the factors at work here.

The hour of slowest activity for the fixed station was the hour beginning 1700Z Sunday shown as hour 16 on the chart. Peak hour for the in-state fixed BIC stations was the first hour with a rate of 64. Average hourly QSO rate for this group of stations was 48.

## 2010 Texas QSO Party Participation and Activity Report

### Hourly QSO Activity by BIC Out-of-State Fixed Stations

Now suppose instead that you are outside of Texas and plan to be in the chair the entire 18 hour period. On average what kind of hourly rates could you expect as a result of that location and commitment? The chart below shows the level of activity by the BIC Out-of-State group.



For this set of stations the population of available stations is potentially much less since they can only work dupe-limited Texas fixed stations and the smaller number of Texas mobile stations which are less constrained by the dupe rule since they can change counties and work the station again. So its understandable that the hourly QSO rates for this group are considerably less than for the in-state stations. Another noticeable difference is the relatively constant level of activity for these across all hours of the contest – average hourly QSOs for this group was 21 whereas the peak was 27 and the minimum was 18. The hourly QSOs are probably supported by the mobile activity leading to the fairly constant level of activity.

### Time in the Chair

Finally the following pages show the results from which the BIC designations were made. It's a look across all of the hours of the contest and identifying, for each station, those hours in which that station made at least one QSO. Those hours are shown as green cells and the inactive hours are shown as red.

## 2010 Texas QSO Party Participation and Activity Report

	Saturday Hours											Sunday Hours						Hours		
	14	15	16	17	18	19	20	21	22	23	00	01	14	15	16	17	18	19		On Air
AD4EB	1	1	1	1	1	1	1	1	1	1	1	1	1	1	1	1	1	1	18	BIC Award
K5NA	1	1	1	1	1	1	1	1	1	1	1	1	1	1	1	1	1	1	18	BIC Award
KK5LO	1	1	1	1	1	1	1	1	1	1	1	1	1	1	1	1	1	1	18	BIC Award
N5DO	1	1	1	1	1	1	1	1	1	1	1	1	1	1	1	1	1	1	18	BIC Award
N5NA	1	1	1	1	1	1	1	1	1	1	1	1	1	1	1	1	1	1	18	BIC Award
N5RZ	1	1	1	1	1	1	1	1	1	1	1	1	1	1	1	1	1	1	18	BIC Award
N5TM	1	1	1	1	1	1	1	1	1	1	1	1	1	1	1	1	1	1	18	BIC Award
NO5W	1	1	1	1	1	1	1	1	1	1	1	1	1	1	1	1	1	1	18	BIC Award
W0BH	1	1	1	1	1	1	1	1	1	1	1	1	1	1	1	1	1	1	18	BIC Award
W5TM	1	1	1	1	1	1	1	1	1	1	1	1	1	1	1	1	1	1	18	BIC Award
AE5GT	1	1	1	1	1	1	1	1	1	1	1	1	1	1	1	1	1	1	18	BIC Award
K5BZH	1	1	1	1	1	1	1	1	1	1	1	1	1	1	1	1	1	1	18	BIC Award
K5LH	1	1	1	1	1	1	1	1	1	1	1	1	1	1	1	1	1	1	18	BIC Award
KD5LNO	1	1	1	1	1	1	1	1	1	1	1	1	1	1	1	1	1	1	18	BIC Award
N5HW	1	1	1	1	1	1	1	1	1	1	1	1	1	1	1	1	1	1	18	BIC Award
N5NK	1	1	1	1	1	1	1	1	1	1	1	1	1	1	1	1	1	1	18	BIC Award
N5NXS	1	1	1	1	1	1	1	1	1	1	1	1	1	1	1	1	1	1	18	BIC Award
NR5M	1	1	1	1	1	1	1	1	1	1	1	1	1	1	1	1	1	1	18	BIC Award
NT5O	1	1	1	1	1	1	1	1	1	1	1	1	1	1	1	1	1	1	18	BIC Award
W5CT	1	1	1	1	1	1	1	1	1	1	1	1	1	1	1	1	1	1	18	BIC Award
W5MF	1	1	1	1	1	1	1	1	1	1	1	1	1	1	1	1	1	1	18	BIC Award
W5SL	1	1	1	1	1	1	1	1	1	1	1	1	1	1	1	1	1	1	18	BIC Award
WB5BKL	1	1	1	1	1	1	1	1	1	1	1	1	1	1	1	1	1	1	18	BIC Award
WD5DDH	1	1	1	1	1	1	1	1	1	1	1	1	1	1	1	1	1	1	18	BIC Award
K3TW	1	1	1	1	1	1	1	1	1	1	1	1	1	1	1	1	1	1	18	BIC Award
K4ZGB	1	1	1	1	1	1	1	1	1	1	1	1	1	1	1	1	1	1	18	BIC Award
K7ZD	1	1	1	1	1	1	1	1	1	1	1	1	1	1	1	1	1	1	18	BIC Award
K8QWY	1	1	1	1	1	1	1	1	1	1	1	1	1	1	1	1	1	1	18	BIC Award
KB9OWD	1	1	1	1	1	1	1	1	1	1	1	1	1	1	1	1	1	1	18	BIC Award
KI2G	1	1	1	1	1	1	1	1	1	1	1	1	1	1	1	1	1	1	18	BIC Award
KN4Y	1	1	1	1	1	1	1	1	1	1	1	1	1	1	1	1	1	1	18	BIC Award
KV8Q	1	1	1	1	1	1	1	1	1	1	1	1	1	1	1	1	1	1	18	BIC Award
N1LN	1	1	1	1	1	1	1	1	1	1	1	1	1	1	1	1	1	1	18	BIC Award
N4AAI	1	1	1	1	1	1	1	1	1	1	1	1	1	1	1	1	1	1	18	BIC Award
N4JF	1	1	1	1	1	1	1	1	1	1	1	1	1	1	1	1	1	1	18	BIC Award
N5LZ	1	1	1	1	1	1	1	1	1	1	1	1	1	1	1	1	1	1	18	BIC Award
NT2A	1	1	1	1	1	1	1	1	1	1	1	1	1	1	1	1	1	1	18	BIC Award
VE3KZ	1	1	1	1	1	1	1	1	1	1	1	1	1	1	1	1	1	1	18	BIC Award
W1KDA	1	1	1	1	1	1	1	1	1	1	1	1	1	1	1	1	1	1	18	BIC Award
W4UCZ	1	1	1	1	1	1	1	1	1	1	1	1	1	1	1	1	1	1	18	BIC Award
W7GVE	1	1	1	1	1	1	1	1	1	1	1	1	1	1	1	1	1	1	18	BIC Award
W8CM	1	1	1	1	1	1	1	1	1	1	1	1	1	1	1	1	1	1	18	BIC Award
WA3HAE	1	1	1	1	1	1	1	1	1	1	1	1	1	1	1	1	1	1	18	BIC Award
WA6KHK	1	1	1	1	1	1	1	1	1	1	1	1	1	1	1	1	1	1	18	BIC Award
WB2ABD	1	1	1	1	1	1	1	1	1	1	1	1	1	1	1	1	1	1	18	BIC Award
	In State Mobile						In State Fixed					Out of State								

## 2010 Texas QSO Party Participation and Activity Report

	Saturday Hours												Sunday Hours					Hours On Air	
	14	15	16	17	18	19	20	21	22	23	00	01	14	15	16	17	18		19
K0DEQ	1	1	1	1	1	1	1	1	1	1	1	1	1	0	1	1	1	1	17
K4AMC	1	1	1	1	1	1	1	1	1	1	1	1	1	1	0	1	1	1	17
K5DX	1	1	1	1	1	1	1	1	1	1	1	0	1	1	1	1	1	1	17
K5IZO	1	1	1	1	1	1	1	1	1	1	1	1	1	1	0	1	1	1	17
K5UN	1	1	1	1	1	1	1	1	1	1	1	1	0	1	1	1	1	1	17
K6WSC	1	1	1	1	1	1	1	0	1	1	1	1	1	1	1	1	1	1	17
K8FZY	1	1	1	1	1	1	1	1	1	1	1	1	1	0	1	1	1	1	17
N8II	1	1	1	1	1	1	1	1	1	1	1	0	1	1	1	1	1	1	17
NV5C	1	1	1	1	1	1	1	1	1	1	0	1	1	1	1	1	1	1	17
W0GXQ	1	1	1	1	1	1	0	1	1	1	1	1	1	1	1	1	1	1	17
W5HNS	0	1	1	1	1	1	1	1	1	1	1	1	1	1	1	1	1	1	17
W5PF	0	1	1	1	1	1	1	1	1	1	1	1	1	1	1	1	1	1	17
W8TM	1	1	1	1	1	1	1	1	0	1	1	1	1	1	1	1	1	1	17
W9LHG	1	1	1	1	1	1	1	1	1	1	1	1	1	1	1	1	0	1	17
WB8LBZ	1	1	1	1	1	1	1	1	1	1	1	0	1	1	1	1	1	1	17
WC5T	1	1	1	1	1	1	1	1	1	1	1	0	1	1	1	1	1	1	17
WD5IYT	1	1	1	1	1	1	1	1	1	1	1	0	1	1	1	1	1	1	17
AA4GT	1	1	1	1	0	1	1	1	1	1	1	1	1	1	1	1	0	1	16
AD5WB	1	1	1	1	1	1	1	1	1	1	0	0	1	1	1	1	1	1	16
DL3DXX	1	1	1	1	1	1	1	1	0	0	1	1	1	1	1	1	1	1	16
K0HNC	1	1	1	1	0	1	1	0	1	1	1	1	1	1	1	1	1	1	16
K0PC	1	1	1	1	1	1	1	1	0	0	1	1	1	1	1	1	1	1	16
K4AMA	1	1	1	1	1	1	1	1	1	0	1	1	1	1	1	0	1	1	16
K5NDB	1	1	1	1	1	0	1	1	1	1	0	1	1	1	1	1	1	1	16
KB9BIT	1	1	1	1	1	1	1	1	1	1	0	1	1	1	1	1	0	1	16
KD5EIJ	1	1	1	1	1	1	1	1	1	1	1	0	1	1	1	1	0	1	16
KK5W	1	1	1	0	0	1	1	1	1	1	1	1	1	1	1	1	1	1	16
KK7AC	1	1	1	1	1	1	1	1	1	1	1	1	1	1	1	1	0	0	16
N0TA	1	1	1	1	1	1	1	1	1	1	1	1	1	0	1	1	1	0	16
N5JB	0	1	0	1	1	1	1	1	1	1	1	1	1	1	1	1	1	1	16
N5MT	1	1	1	0	1	1	1	1	1	1	1	0	1	1	1	1	1	1	16
N5WR	1	1	1	1	1	1	1	1	1	1	1	1	1	1	1	1	0	0	16
N5XTR	1	1	0	1	1	1	1	1	1	0	1	1	1	1	1	1	1	1	16
ND3R	1	1	1	1	1	1	1	1	0	0	1	1	1	1	1	1	1	1	16
NG5NG	0	1	1	1	1	1	1	1	1	0	1	1	1	1	1	1	1	1	16
W3DYA	1	1	1	1	1	1	1	1	1	1	0	0	1	1	1	1	1	1	16
W5ESE	0	0	1	1	1	1	1	1	1	1	1	1	1	1	1	1	1	1	16
W5JAW	0	1	1	1	1	1	1	1	0	1	1	1	1	1	1	1	1	1	16
W5JNP	1	1	1	1	1	1	1	1	1	1	1	0	1	1	1	1	0	1	16
W6USN	1	1	1	0	1	1	1	0	1	1	1	1	1	1	1	1	1	1	16
WA8ZBT	0	0	1	1	1	1	1	1	1	1	1	1	1	1	1	1	1	1	16
WB0TEV	1	1	1	1	1	1	1	1	0	0	1	1	1	1	1	1	1	1	16
WI5ID	1	1	1	1	1	1	1	1	1	1	1	1	1	0	0	1	1	1	16

## 2010 Texas QSO Party Participation and Activity Report

	Saturday Hours											Sunday Hours					Hours On Air		
	14	15	16	17	18	19	20	21	22	23	00	01	14	15	16	17		18	19
HK3Q	1	1	1	1	0	1	1	1	1	1	0	0	1	1	1	1	1	1	15
K3TD	0	0	1	1	1	1	1	1	1	1	1	1	0	1	1	1	1	1	15
K4MM	0	0	1	1	1	1	1	1	1	1	1	0	1	1	1	1	1	1	15
K5TQP	1	1	1	1	1	0	1	1	1	1	1	1	1	1	1	0	0	1	15
K9DU	1	1	1	1	1	0	0	0	1	1	1	1	1	1	1	1	1	1	15
K9EN	0	1	1	1	1	1	1	1	1	1	1	1	1	1	0	0	1	1	15
KD5MMM	0	1	1	1	1	1	1	1	1	1	1	1	1	0	0	1	1	1	15
N1NN	1	1	1	1	1	0	1	0	1	1	1	1	1	1	1	1	0	1	15
N3UM	1	1	1	0	1	1	1	1	0	1	1	1	1	1	1	1	0	1	15
NV9X	1	1	1	0	1	1	1	0	0	1	1	1	1	1	1	1	1	1	15
VE3OM	0	1	1	0	1	1	1	1	1	1	1	1	1	0	1	1	1	1	15
W0VX	1	1	1	1	0	1	1	1	1	1	1	1	1	0	0	1	1	1	15
W4AWF	1	1	1	1	0	0	0	1	1	1	1	1	1	1	1	1	1	1	15
W4RKV	0	1	1	1	0	1	1	1	1	1	0	1	1	1	1	1	1	1	15
W5NA	1	1	1	1	1	1	1	1	1	0	0	0	1	1	1	1	1	1	15
W5RQ	1	1	1	1	1	1	1	1	1	0	0	0	1	1	1	1	1	1	15
W8CAG	0	1	1	1	1	1	1	1	1	1	0	0	1	1	1	1	1	1	15
W8KNO	1	1	1	1	1	1	1	1	1	1	1	0	0	0	1	1	1	1	15
WA5DSS	0	1	0	1	1	1	1	1	1	1	1	1	1	1	1	1	0	1	15
WA7JHQ	1	1	1	1	1	1	1	1	1	1	1	1	1	1	0	0	0	1	15
AB5X	1	1	0	0	0	1	1	1	1	1	1	0	1	1	1	1	1	1	14
K1TN	0	1	1	1	0	1	1	1	1	1	0	0	1	1	1	1	1	1	14
K3GY	1	1	1	1	1	1	0	0	1	1	1	1	0	0	1	1	1	1	14
K5AEM	1	1	1	1	1	1	1	1	1	0	1	1	0	0	1	1	0	1	14
KF5FEA	1	0	1	1	1	1	1	1	1	1	1	0	1	0	0	1	1	1	14
KN5L	1	1	1	0	1	1	1	1	1	0	0	0	1	1	1	1	1	1	14
KS4X	1	1	1	0	0	0	1	1	0	1	1	1	1	1	1	1	1	1	14
N1CC	1	1	1	1	1	0	0	0	1	1	1	1	1	1	1	0	1	1	14
N5CAS	0	0	0	1	1	1	1	1	1	1	1	0	1	1	1	1	1	1	14
N5LUL	1	1	1	1	1	1	1	1	1	1	1	1	1	1	0	0	0	0	14
N9AUG	1	1	0	1	1	1	1	1	1	1	1	1	0	0	1	1	1	0	14
N9NM	0	1	1	1	1	1	1	1	1	1	1	0	0	0	1	1	1	1	14
N9OF	0	1	1	1	1	1	1	1	1	1	0	1	0	0	1	1	1	1	14
NA4K	0	0	1	1	1	1	0	1	1	1	1	1	1	1	1	1	0	1	14
NA5TR	0	1	1	1	1	0	1	1	1	0	0	1	1	1	1	1	1	1	14
VE3GXW	1	1	1	1	0	0	1	1	0	1	1	1	1	1	1	1	0	1	14
W2CVW	1	1	0	1	1	1	1	1	1	1	1	0	1	1	0	0	1	1	14
W5FWR	1	1	1	1	0	1	1	0	0	1	1	0	1	1	1	1	1	1	14
W5MRC	1	1	1	1	1	1	1	1	0	1	1	1	0	0	1	0	1	1	14
W5NA	1	1	1	1	1	1	1	1	0	0	0	0	1	1	1	1	1	1	14
W5SB	1	1	1	1	1	1	1	1	0	1	0	0	1	1	1	0	1	1	14
WB4FEV	0	1	1	1	1	0	1	1	1	1	0	0	1	1	1	1	1	1	14
WR1TX	1	0	1	1	1	1	1	1	1	0	0	0	1	1	1	1	1	1	14

## 2010 Texas QSO Party Participation and Activity Report

	Saturday Hours												Sunday Hours					Hours On Air	
	14	15	16	17	18	19	20	21	22	23	00	01	14	15	16	17	18		19
K0JPL	1	0	0	0	1	1	1	1	1	1	1	1	0	0	1	1	1	1	13
K5EWJ	0	0	0	0	1	1	1	1	1	1	0	1	1	1	1	1	1	1	13
K7NWM	1	1	1	1	1	0	1	1	1	1	0	0	1	0	1	0	1	1	13
K9YC	0	1	1	1	1	1	1	1	1	0	0	0	1	1	1	1	1	1	13
KD0JLE	1	1	1	1	1	1	1	0	0	0	0	0	1	1	1	1	1	1	13
KJ4IPF	1	1	0	0	1	1	1	1	1	1	1	0	0	0	1	1	1	1	13
N5EN	0	0	0	1	1	1	1	1	1	1	0	0	1	1	1	1	1	1	13
N5XG	1	1	1	1	1	1	1	0	0	0	0	0	1	1	1	1	1	1	13
SP5SA	1	1	1	1	1	1	1	0	0	0	0	0	1	1	1	1	1	1	13
VE3TW	1	1	0	0	1	1	1	0	1	1	0	1	1	0	1	1	1	1	13
W0UY	1	1	1	0	1	1	1	1	1	0	0	0	1	1	1	1	1	0	13
W1END	0	0	1	1	0	1	1	1	1	1	1	0	1	1	0	1	1	1	13
W3TD	0	0	1	1	1	1	1	0	1	0	0	1	1	1	1	1	1	1	13
W5ASP	0	1	1	1	1	1	1	1	1	1	0	0	0	0	1	1	1	1	13
W7KAM	1	1	1	1	1	1	0	1	1	0	0	0	0	1	1	1	1	1	13
WA7SLH	0	1	1	1	1	1	0	1	1	0	1	1	1	1	1	0	0	1	13
K5OAI	1	1	0	0	0	1	1	1	1	1	0	1	1	1	1	1	0	0	12
KB9YGD	0	0	1	1	1	1	0	1	1	1	1	0	0	0	1	1	1	1	12
KC4YBO	1	1	0	1	0	1	1	1	1	1	0	0	0	1	1	1	1	0	12
N5AW	1	0	0	0	1	1	0	0	0	1	1	1	1	1	1	1	1	1	12
N9FC	1	1	1	1	1	0	1	1	0	0	0	0	1	1	1	1	1	0	12
PA3ARM	1	1	1	1	1	1	1	1	0	0	0	0	0	1	1	1	0	1	12
W5XD	1	1	1	1	1	1	1	1	1	1	1	1	0	0	0	0	0	0	12
W6RLL	1	1	1	0	0	1	1	1	1	1	0	1	1	1	1	0	0	0	12
F5IN	1	1	0	1	1	0	0	0	0	0	0	1	1	1	1	1	1	1	11
K4LTA	1	1	1	0	0	0	1	1	0	0	0	0	1	1	1	1	1	1	11
K5STZ	1	1	1	1	0	1	1	1	1	1	1	1	0	0	0	0	0	0	11
K5TER	1	1	1	1	1	0	0	1	1	1	1	1	0	0	0	0	1	0	11
K6VFF	0	0	0	1	1	1	1	1	1	0	0	0	1	1	1	1	0	1	11
KD5TIO	1	1	1	1	1	1	1	1	1	1	1	0	0	0	0	0	0	0	11
KE5LQ	0	0	1	1	1	1	1	0	0	0	0	0	1	1	1	1	1	1	11
KE5RON	1	1	1	1	0	0	1	1	1	1	1	0	0	0	0	1	1	0	11
KF5CRX	1	1	1	1	1	1	1	1	1	1	1	0	0	0	0	0	0	0	11
N5PHT	1	1	1	1	1	1	1	1	1	1	1	0	0	0	0	0	0	0	11
N5RMS	0	0	0	1	1	1	1	1	1	1	0	1	0	0	0	1	1	1	11
W4SIG	1	1	1	1	1	1	1	1	0	0	0	0	1	1	0	0	0	1	11
W4UT	0	0	0	0	0	1	1	1	0	0	1	1	1	1	1	1	1	1	11
W5QLF	0	0	0	0	0	1	1	1	0	1	1	1	1	1	0	1	1	1	11
W5VX	1	1	1	1	1	1	1	1	1	0	0	0	1	0	0	0	0	1	11
WA5DTK	1	1	1	1	1	1	1	0	0	0	0	0	0	0	1	1	1	1	11
WA5TRX	0	0	0	0	1	1	1	1	1	1	0	1	0	0	1	1	1	1	11
WB5TKI	0	0	1	1	1	1	1	1	0	1	1	1	0	0	0	0	1	1	11

## 2010 Texas QSO Party Participation and Activity Report

	Saturday Hours											Sunday Hours					Hours On Air		
	14	15	16	17	18	19	20	21	22	23	00	01	14	15	16	17		18	19
AB7RW	0	0	0	0	0	0	0	1	1	1	1	1	0	1	1	1	1	1	10
K4GOP	1	1	0	0	0	1	0	1	1	1	0	0	1	0	1	0	1	1	10
K5CX	1	1	1	1	1	1	1	1	1	1	0	0	0	0	0	0	0	0	10
KB5VGD	0	1	0	1	0	1	1	1	1	1	1	0	0	1	1	0	0	0	10
KD0CVZ	0	1	1	1	1	1	1	1	0	0	0	0	1	1	1	0	0	0	10
KE0G	0	0	1	1	1	0	1	1	1	1	0	0	0	0	1	1	1	0	10
KE3X	0	0	0	1	1	1	1	1	0	0	0	1	1	1	1	0	0	1	10
W1WBB	0	0	0	0	0	0	1	1	0	1	1	1	1	1	1	0	1	1	10
W5CUB	0	1	0	1	1	1	1	1	1	1	1	1	0	0	0	0	0	0	10
W5ETJ	1	1	1	1	1	1	1	1	0	1	0	0	1	0	0	0	0	0	10
WA4JA	1	1	1	0	0	0	0	1	1	1	1	1	1	1	0	0	0	0	10
AE5NO	1	1	0	0	0	1	0	0	1	1	0	0	0	0	1	1	1	1	9
K5AVY	1	1	1	0	0	0	0	0	1	1	1	0	0	0	0	1	1	1	9
K5END	0	1	1	1	1	0	1	1	1	1	1	0	0	0	0	0	0	0	9
K7RB	0	0	1	1	1	1	1	0	0	0	0	0	1	1	0	0	1	1	9
K7ZYV	1	1	1	1	1	1	1	1	1	0	0	0	0	0	0	0	0	0	9
K8MR	0	0	0	1	1	1	0	0	1	0	1	1	1	1	1	0	0	0	9
KD6CUB	1	1	0	0	0	0	0	0	1	1	1	0	1	0	0	1	1	1	9
KI5JF	0	1	1	0	0	0	1	0	1	1	0	0	1	1	0	1	1	0	9
KI6OY	0	0	0	1	1	0	0	1	1	1	1	0	0	1	1	0	0	1	9
KR9E	0	0	0	0	0	0	0	0	1	1	1	1	1	1	1	0	1	1	9
KV5Q	1	0	0	0	0	1	1	0	0	1	1	0	0	0	1	1	1	1	9
N3RJ	1	1	1	1	1	1	1	0	1	0	0	0	1	0	0	0	0	0	9
N3TG	1	0	1	1	1	1	0	0	0	0	0	1	1	0	0	0	1	1	9
N4UC	0	1	1	1	0	0	1	1	0	1	1	0	0	0	0	1	1	0	9
N5DTT	0	0	0	1	1	1	1	1	0	0	0	0	0	0	1	1	1	1	9
N5HMH	0	0	0	0	0	0	1	1	1	1	1	1	0	0	1	1	0	1	9
N7UR	0	0	1	1	0	0	1	1	1	1	0	1	0	0	0	0	1	1	9
NE0S	0	0	0	0	0	0	0	0	0	1	1	1	1	1	1	1	1	1	9
NO8C	0	0	0	0	0	1	0	0	1	1	1	1	1	1	1	1	0	0	9
NU5DE	1	0	0	1	1	1	1	1	1	1	1	0	0	0	0	0	0	0	9
OM3DX	0	1	1	1	1	0	0	0	0	0	0	0	1	1	1	1	1	0	9
W5YG	1	1	1	1	1	1	1	1	1	0	0	0	0	0	0	0	0	0	9
W8OV	1	0	1	1	0	0	0	0	0	0	0	0	1	1	1	1	1	1	9
AA0A	1	1	1	0	0	1	0	0	0	0	1	1	1	0	0	0	1	0	8
AB2AN	0	0	0	0	0	0	1	1	1	0	0	0	0	0	1	1	1	1	8
K2ZR	0	0	0	1	0	0	1	1	0	0	1	1	0	1	1	0	1	0	8
K5BDL	1	0	1	1	1	0	0	0	0	1	0	0	1	0	0	0	1	1	8
K5KTF	1	1	0	0	1	0	0	0	0	0	0	0	1	1	1	0	1	1	8
K5QBX	0	0	1	1	1	0	1	0	1	0	0	0	0	0	0	1	1	1	8
K5SRT	1	1	1	0	0	1	1	1	1	1	0	0	0	0	0	0	0	0	8
KB5DRJ	0	0	0	1	1	1	1	0	0	0	0	0	0	0	1	1	0	1	8
N5PO	1	0	0	1	1	1	1	1	1	0	0	0	0	1	0	0	0	0	8
N5SV	0	0	1	0	0	0	0	1	0	0	0	0	1	1	1	1	1	1	8
N5ZKA	0	0	0	0	1	1	1	1	1	1	0	0	1	0	1	0	0	0	8
NA5F	0	1	1	1	1	1	1	1	1	0	0	0	0	0	0	0	0	0	8
NM5M	0	1	0	0	0	0	1	1	0	0	0	0	1	1	1	0	1	1	8



## 2010 Texas QSO Party Participation and Activity Report

	Saturday Hours											Sunday Hours					Hours On Air		
	14	15	16	17	18	19	20	21	22	23	00	01	14	15	16	17		18	19
OK1VD	0	0	0	1	1	1	1	0	0	0	0	0	0	0	1	1	1	1	8
W5SH	1	0	0	0	0	1	1	1	1	1	1	1	0	0	0	0	0	0	8
W6NWF	1	0	0	0	1	0	1	0	0	0	0	0	1	1	1	0	1	1	8
WB5LJO	1	1	0	1	0	0	0	0	0	1	1	0	0	0	1	1	1	8	
WX5SD	1	1	0	1	0	0	1	1	0	0	0	0	1	1	0	1	0	8	
AA5JG	0	0	0	1	1	1	1	1	0	0	0	0	1	0	0	0	0	7	
K4KO	1	1	1	1	1	1	1	0	0	0	0	0	0	0	0	0	0	7	
K5TRM	0	0	0	0	1	1	1	1	0	1	1	1	0	0	0	0	0	7	
K6RB	0	1	0	0	0	1	1	0	1	1	1	1	0	0	0	0	0	7	
KC4MYV	0	0	0	0	0	0	0	1	1	1	1	1	0	0	0	1	1	7	
KD8JAM	1	1	1	1	0	0	0	0	0	0	1	0	0	1	0	1	0	7	
KF5BPR	0	0	0	0	0	0	1	1	1	1	1	0	0	0	1	1	0	7	
KL5DX	0	0	0	0	1	1	1	1	1	1	0	0	0	0	0	0	1	7	
LW3EX	0	1	1	1	1	1	1	0	0	0	0	0	0	1	0	0	0	7	
N5BIA	0	0	0	1	1	0	1	1	1	0	0	0	0	1	0	1	0	7	
N5WLA	1	1	1	1	1	0	1	0	0	0	0	1	0	0	0	0	0	7	
ND5T	0	0	1	1	1	1	1	1	0	0	0	0	0	0	0	0	0	7	
NQ2W	0	0	0	1	0	0	1	0	0	1	0	1	1	1	1	0	0	7	
NX8G	1	1	0	0	0	0	0	0	0	0	0	0	1	1	1	1	0	7	
VE5BCS	0	1	0	0	0	1	0	0	1	0	1	1	0	0	1	0	1	7	
W2KRD	0	1	0	0	1	1	0	0	0	1	0	0	1	1	0	0	1	7	
W2TX	0	0	1	1	1	1	1	0	0	1	1	0	0	0	0	0	0	7	
W9ROG	1	1	0	1	0	0	0	0	0	0	0	0	1	0	1	1	1	7	
AB2TC	0	1	0	1	0	1	1	1	0	0	0	0	0	0	0	1	0	6	
DL3GA	0	0	0	0	1	1	1	1	0	0	0	0	0	0	0	1	1	6	
K0VXU	1	1	0	0	0	0	0	0	0	1	1	1	0	0	1	0	0	6	
K3TN	1	1	1	0	1	0	0	0	0	0	0	0	0	0	1	0	1	6	
K5PI	1	1	1	0	0	0	0	0	0	0	0	0	0	0	1	0	1	6	
K5XA	0	1	1	0	0	1	0	0	0	0	1	0	0	0	0	1	1	6	
K5YQF	0	0	1	1	1	1	1	0	0	0	1	0	0	0	0	0	0	6	
KD5RSS	0	0	0	0	0	1	1	1	0	0	1	0	0	0	0	1	1	6	
KE5BUS	0	0	0	0	0	0	0	0	0	0	0	0	1	1	1	1	1	6	
KE5DFR	0	0	0	0	0	1	1	0	1	0	0	1	0	0	0	1	1	6	
KE7TM	0	0	0	1	1	0	0	0	1	0	1	0	0	1	0	0	1	6	
N3BB	0	0	0	0	0	0	0	0	0	0	0	0	1	1	1	1	1	6	
N5AUS	0	1	0	0	0	0	0	0	0	0	0	0	0	1	1	1	1	6	
NE4M	0	1	0	0	0	0	1	0	0	0	0	1	1	0	1	1	0	6	
OK1AOV	0	1	0	0	1	0	1	1	0	0	0	0	1	1	0	0	0	6	
VE1ZA	0	0	0	0	0	0	0	0	1	1	1	1	0	0	1	0	0	6	
W4PAH	0	0	0	0	0	0	0	0	0	0	0	0	1	1	1	1	1	6	
W9WLX	0	0	1	1	1	1	0	0	1	0	0	0	0	0	1	0	0	6	
WA5M	1	1	1	1	1	0	0	0	0	0	0	0	0	0	0	0	1	6	
WB8WKQ	0	0	0	0	1	1	0	0	1	0	1	1	0	0	1	0	0	6	

## 2010 Texas QSO Party Participation and Activity Report

	Saturday Hours											Sunday Hours					Hours On Air		
	14	15	16	17	18	19	20	21	22	23	00	01	14	15	16	17		18	19
HA3NU	0	0	0	0	1	1	1	1	1	0	0	0	0	0	0	0	0	0	5
K1QS	1	1	0	0	0	0	1	0	1	0	0	0	0	1	0	0	0	0	5
K3TX	0	0	0	0	0	0	1	0	0	0	1	0	1	1	0	0	0	0	5
K5WPH	0	0	0	0	0	1	1	1	1	1	0	0	0	0	0	0	0	0	5
KJ4AOM	1	1	0	0	0	0	0	0	0	0	1	0	0	0	1	0	1	0	5
KM5Z	0	0	0	0	0	0	1	1	1	0	0	0	0	0	0	1	1	0	5
VE6VS	0	0	1	0	0	1	0	0	1	1	0	0	0	0	0	1	0	0	5
W0NFS	0	1	1	0	0	1	0	1	1	0	0	0	0	0	0	0	0	0	5
W4PHS	0	1	1	1	0	0	0	1	0	0	1	0	0	0	0	0	0	0	5
W8IQ	0	0	0	0	0	0	1	1	0	0	0	0	0	0	1	1	0	1	5
DL4FN	0	0	0	0	0	1	1	0	0	0	0	0	0	0	0	1	1	0	4
IK2RMZ	0	0	0	0	1	1	0	0	0	0	0	0	0	0	1	0	1	0	4
K0VH	0	0	1	1	0	0	0	1	1	0	0	0	0	0	0	0	0	0	4
K5TU	0	0	0	0	0	0	0	0	0	0	0	0	0	1	1	0	0	1	4
K6CSL	0	0	0	0	0	0	0	1	0	0	0	1	0	0	0	1	0	1	4
K6III	0	0	0	0	1	1	1	0	0	1	0	0	0	0	0	0	0	0	4
KC5TA	0	0	0	0	0	0	0	0	0	0	0	0	0	0	1	1	1	1	4
KE5OG	0	0	0	0	0	1	1	0	0	0	1	1	0	0	0	0	0	0	4
W5UJQ	0	0	1	1	0	0	0	1	1	0	0	0	0	0	0	0	0	0	4
WA5LHM	1	1	0	0	1	0	0	0	0	0	0	1	0	0	0	0	0	0	4
WB8JUI	0	0	0	0	0	0	0	0	0	0	0	0	0	0	1	1	1	1	4
WJ2K	0	0	0	0	0	0	0	0	0	0	0	0	0	0	1	1	1	1	4
K0RRP	1	1	1	0	0	0	0	0	0	0	0	0	0	0	0	0	0	0	3
K4GDB	1	1	1	0	0	0	0	0	0	0	0	0	0	0	0	0	0	0	3
K5LKJ	0	0	0	0	0	1	0	0	0	0	0	0	0	0	0	1	1	0	3
K5ME	0	0	0	0	0	0	0	0	0	0	0	0	0	1	1	0	0	1	3
K5MRA	1	1	1	0	0	0	0	0	0	0	0	0	0	0	0	0	0	0	3
K5MV	0	0	0	0	0	0	0	0	0	0	0	0	0	1	1	1	0	0	3
KC7H	0	0	0	0	0	0	0	0	0	0	0	0	0	0	1	1	0	0	3
KR2AA	0	0	0	1	0	0	0	1	0	0	0	0	0	1	0	0	0	0	3
N8NA	0	0	0	0	1	0	0	0	0	0	0	0	0	0	0	0	1	1	3
NF4A	0	0	0	0	0	0	0	0	0	1	1	1	0	0	0	0	0	0	3
W5MSQ	1	1	1	0	0	0	0	0	0	0	0	0	0	0	0	0	0	0	3
WB5R	1	0	0	1	1	0	0	0	0	0	0	0	0	0	0	0	0	0	3
K3CQ	0	0	0	0	0	0	0	0	0	0	1	1	0	0	0	0	0	0	2
KB3SEO	0	0	0	0	0	0	1	1	0	0	0	0	0	0	0	0	0	0	2
KG0AL	0	0	0	0	0	0	0	0	0	0	0	0	0	0	1	1	0	0	2
KM5YX	0	0	0	0	0	0	1	0	0	0	0	0	0	0	0	1	0	0	2
LY2FN	0	0	0	0	0	1	1	0	0	0	0	0	0	0	0	0	0	0	2
LY5A	0	1	1	0	0	0	0	0	0	0	0	0	0	0	0	0	0	0	2
N4KB	0	0	0	0	0	0	0	0	0	0	1	1	0	0	0	0	0	0	2
NE4S	0	0	0	0	0	0	0	0	0	0	0	0	0	0	1	1	0	0	2
NX4N	0	0	0	0	0	0	1	0	0	0	0	0	0	0	0	1	0	0	2
SM6Z	0	0	1	0	0	0	0	0	0	0	0	0	0	0	1	0	0	0	2
VE3PYJ	0	0	0	0	0	0	0	0	0	0	1	1	0	0	0	0	0	0	2
W8IDW	0	0	0	0	0	0	0	0	0	1	0	0	0	0	0	0	1	0	2
WT5N	0	0	0	0	0	0	0	0	0	0	0	0	0	0	0	1	1	0	2

## 2010 Texas QSO Party Participation and Activity Report

	Saturday Hours											Sunday Hours					Hours On Air		
	14	15	16	17	18	19	20	21	22	23	00	01	14	15	16	17		18	19
AD6LV	0	0	0	0	0	0	0	0	0	0	0	0	0	0	0	1	0	0	1
K5WW	0	0	0	0	0	0	0	0	0	0	0	0	0	0	0	0	0	1	1
KC2TFI	0	0	0	0	0	0	0	0	0	0	0	0	0	0	0	0	0	1	1
KD2KW	0	0	0	0	0	0	0	1	0	0	0	0	0	0	0	0	0	0	1
NY4JB	0	0	0	0	1	0	0	0	0	0	0	0	0	0	0	0	0	0	1
W4BK	0	0	1	0	0	0	0	0	0	0	0	0	0	0	0	0	0	0	1
WB5EXI	0	0	0	0	0	0	0	0	0	0	0	0	0	0	0	0	0	1	1

### Summary

The 2010 Texas QSO Party was very well attended and from the comments seen on 3830 was well-received and enjoyed by all who chose to participate. It might even be considered a benchmark TxQP year and along those lines it is hoped that the analysis and results presented in this report will be useful for assessing participation in future runnings of the party.

The help provided by the following volunteers has been instrumental in getting the logs database populated quickly so that these analyses could be performed. K5OT, WB5BKL, NA5TR each contributed by converting paper logs to Cabrillo electronic format and N5NA contributed by converting all of the ADIF logs into Cabrillo. K5END provided support by reading logs off of floppy disks.